



WESTMEAD  
HOSPITAL  
FOUNDATION

Year in review  
2019 / 2020





# Index

Vision, Mission & Values	5
Chair's Message	6
Head of Development Message	7
Board and Governance	8
Where We Began	11
Our Development	12
A Brunch For Cancer Care	14
The Difference Doctors Can Make	15
A Legacy to Last	17
Where We Are Now	19
Corporate for Community	21
Coleman Greig Challenge - making a difference to newborn care	22
Ramadan Spirit of Giving Benefits Westmead Newborns	23
The Power of Community Spirit	25
WHF Retreat	27
Facts About Westmead Hospital and COVID-19	29
Our Frontline Supporters	30
Where We Are Going	33
Celebrating 30 years with our longest serving Board Member	34
Farewell to a visionary	36
Professor of Immunology reflects on 30 years working with Westmead Hospital Foundation	39
How You Can Help	44





# Our vision, mission and values

## Our Vision

Supporting Westmead Hospital is at the heart of everything we do.

## Our Guiding Principles

These guiding principles shape how we work together as a team and with the people, donors, customers and communities we work to serve.

### – Collaborative

- We do our best when we work with others to achieve mutual goals.

### – Customer / Donor Centric

- We recognise that delivering an excellent customer/donor experience is central to our success.

### – Agents of Change

- We think differently and look beyond the obvious.
- We ask 'why' and 'why not?'
- We constantly strive for new and better ways to achieve our goals.

### – Agile

- We recognise that our environment and the needs of our donors, customers and communities are constantly changing.

### – Reliable

- We continually refine and adapt to these differing and changing needs.
- We are consistent, trustworthy and dependable.

### – Inclusive

- We set realistic and aspirational goals and we strive to achieve them.
- We recognise that we achieve better outcomes when we embrace and respect the different views, cultural backgrounds and abilities of all stakeholders, donors, customers and external communities.



## A message from our Board Chair

MR JAMES NGUYEN

I'm excited to be writing to you during the 30<sup>th</sup> year anniversary of our Foundation. To say that this 30<sup>th</sup> year has been challenging would be an understatement, however it's been pleasing to see how the Foundation, through our staff has focussed its efforts to support Westmead Hospital during COVID-19.

This year, we had hopes to host a function to celebrate this milestone anniversary with you, our valued supporters and donors, Westmead Hospital staff, our Foundation team and residents in the Greater Western Sydney area. However, in the face of COVID-19 health restrictions, the Foundation had to pivot and I'm so very proud that in a relatively short period, we've been able to deliver on a tangible project to Westmead Hospital. The COVID-19 medical staff resting quarters refurbishment has brought together a wide range of sponsors and donors acknowledged in this report.

In reflecting on the wins of the past 12 months, it also affords us the opportunity to reflect on the wins of the last 30 years of our Foundation. We are proud of the achievements your donations have made, including:

- Construction of the Research Education Network building, opened in June 2000, which became one of the six largest medical research institutes in Australia.
- \$10 million raised as seed funding for the Westmead Institute for Medical Research building.

- Ground-breaking research including the Islet Cell Transplantation programme, helping to cure type 1 diabetes, and research using stem cells and gene therapy to address heart failure.

With the pride of our past 30 years' achievements and a sense of adventure, we look to set the building blocks for the next 30 years. In close consultation with Westmead Hospital, we'll look for our next project and how best to engage with staff, our donor base and the wider community to bring it to fruition. Watch this [space](#) and join our journey! I'd like to thank Professor Tony Cunningham AO and Matthew Nott for their services having stepped down from our Board this year. I also welcome David O'Neil and Chris Omeissah who joined our Board as director and company secretary, respectively.

Finally, to our supporters and donors: without your continued and unwavering support, the Foundation would not be able to achieve its purpose.

Thank you, again.

James Nguyen  
Chair, Westmead Hospital Foundation

## A message from our Head of Development

MR JOE CONNEELY



### Westmead Hospital Foundation, a positive story to tell

It is somewhat of a cliché to say that we have carried our work and endeavours by 'Standing on the Shoulders of Giants' of those who have come before us.

However, in many ways that is exactly the way I feel about the work of the Foundation here at Westmead. It wasn't long after the opening in 1978 of Westmead Hospital on the site of the old Parramatta Speedway track, that many of its pioneering medical staff recognised the need to establish a Foundation at the Hospital to support medical research and patient care.

And so, in November 1990, Professor Peter Castaldi AO, Professor Miles Little and Professor Stephen Leeder AO were amongst other founding board members of the Foundation. Professors Jeremy Chapman AC and Tony Cunningham AO soon joined them and are featured in this year's annual report providing an insight into the past 30 years.

Westmead Hospital has since developed a global reputation for its successful integration of healthcare, research and education. The Westmead Health Precinct has now become Australia's largest concentration of health services that is co-located with world-leading education and medical research.

Over the past 30 years, the Foundation has provided tens of millions of dollars in support of these outstanding efforts through generous support and legacy gifts. Western Sydney Local Health District's Research and Education network building and the Westmead Institute for Medical Research building were funded by the Foundation with community and corporate support.

In addition many, many pieces of medical equipment have been donated to provide lifesaving support and treatment for our community. In recent times, we have supported the amazing efforts of our frontline team during the COVID-19 pandemic. The Foundation has raised over \$600,000 in less than six weeks for the mental health and wellbeing of staff through the establishment of a new dedicated rest area.

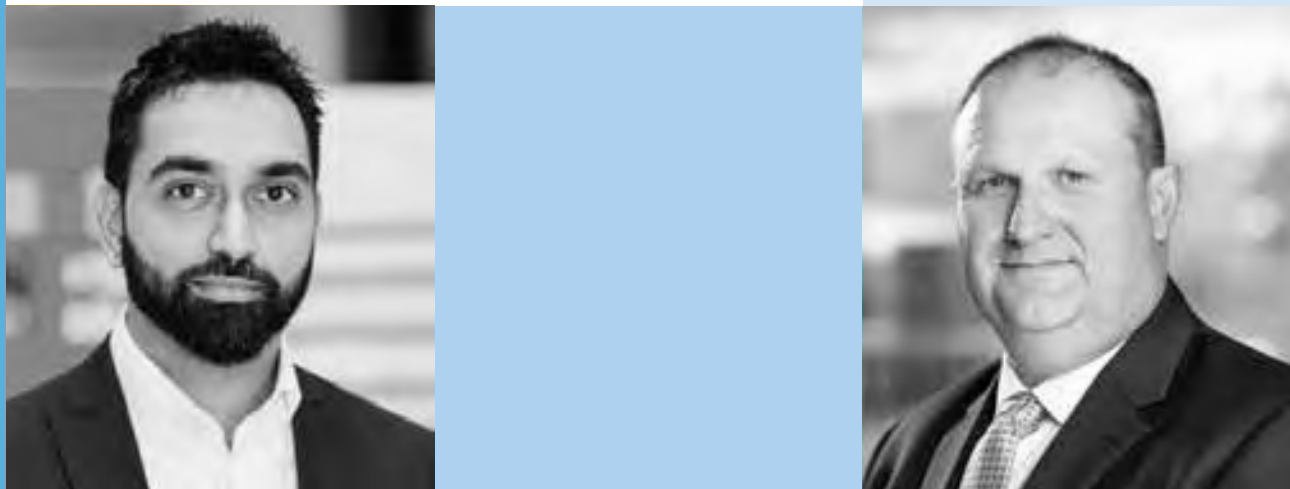
Westmead Hospital Foundation looks forward to continuing this legacy into the future with your continued support and assistance.

Thank you,

Joe Conneely  
Head of Development, Westmead Hospital Foundation



Westmead Hospital Foundation  
Board of Directors



# The Board

Westmead Hospital Foundation's Board of Directors are listed below.

They are entrusted with the authority and management of the Foundation and are accountable to Westmead Hospital Foundation's members.

The Board's role includes setting Westmead Hospital Foundation's strategic direction, and short and long-term objectives, monitoring progress, and supporting staff to deliver the objectives.

The Board has three key areas of focus: Governance, Fundraising and Communication.

**James Nguyen, Chair**

General Counsel & Company Secretary,  
R. Financial Services Pty Ltd

**Dr Jeremy Chapman AC**

Director, Division of Medicine and Cancer  
Services, Westmead Hospital

**Adjunct Associate Professor Robynne Cooke**

Executive Directive Operations,  
Western Sydney Local Health District

**Syed Ahmed**

Chief Digital Officer, Innowell

**David O'Neil**

Group Chief Executive Officer, Castle Hill RSL Group





# Where we began

Westmead Hospital opened its doors in 1978 to provide health care and research for the Western Sydney community.

Not long after that, in 1990, a small team of clinicians and researchers passionate about furthering their work established the  
Westmead Hospital  
Research Foundation.

Westmead Hospital opened in 1978 as a specialised tertiary referral hospital for the western metropolitan area.

# Our development



*Westmead Hospital Grand Opening*



*Westmead Hospital*



*Research and Education  
Network building*



*Central Acute Services Building*

**1788**

*Original inhabitants  
were the Burramattagal  
people of the Dharug  
Nation*

**1968**

*Westmead  
Hospital  
announced*

**1978**

*Westmead  
Hospital  
established*

**1990**

*Westmead  
Hospital  
Research  
Foundation  
established*

**1999**

*Foundation  
renamed to  
Millennium  
Foundation*

**2000**

*Research and  
Education  
Network  
building  
opened*

**2010**

*Foundation  
renamed to  
Westmead  
Medical  
Research  
Foundation*

**2014**

*WIMR –  
Westmead  
Institute  
for Medical  
Research*

**2019**

*Foundation  
renamed to  
Westmead  
Hospital  
Foundation*

**2021**

*CASB -  
Central  
Acute  
Services  
Building  
scheduled  
to open  
next year*

In effect, we have “planted a small tree”.  
It is a healthy tree and has been well planted.  
Our job is to now ensure that our tree  
develops into the tall and strong  
specimen that we all envisage.

*minuted from the first Foundation Board Meeting 1990*



## A brunch for cancer care

Noeline Rozanc, Nurse  
Unit Manager -  
Radiation Oncology  
with Margie Abbott



In 2013, Westmead Cancer Services contacted Westmead Hospital Foundation to enquire whether there was a possibility of a donation to help purchase an Electric Dermatome; a surgical instrument used to “harvest” skin from a patient to use for a skin graft.

A skin graft involves the removal of a section of skin from an uninjured area (donor site), such as the upper thigh, to cover areas which have no skin available following removal of a large skin cancer or melanoma. As Noeline Rozanc, Nurse Unit Manager said, “People often describe the donor site where you take the skin graft as being much more painful than the area that they’ve operated on, so if we can have a smaller donor site, it’s much more comfortable for the patient”.

It can be hard to show the benefits of a piece of equipment that people feel squeamish about or hate to imagine themselves needing, but when the Foundation heard that what the surgical oncologists were using was outdated and difficult to use we knew we had to act.

It takes a very special kind of donor to champion such a cause, and Maureen Rizk was such a person. Helped by Western Sydney businesses Arab Bank Australia and the

George Khouzame Group, Maureen held a brunch which raised more than \$17,000 to purchase the Electric Dermatome. Guest of honour at Maureen’s brunch was none other than Australia’s then First Lady, Margie Abbot.

Westmead Hospital Foundation has worked with the Crown Princess Mary Cancer Centre Westmead for the past 30 years, and has funded equipment including: headlamps and scopes to help in the removal of stitches in facial surgery; an ultrasound used in the brachytherapy suite for patients with gynaecological cancers; and a biofeedback electrotherapy unit used by the speech pathology team for patients who have head and neck cancers.

The Foundation has also worked with community enterprise, Good360 to provide cosmetics to patients undergoing cancer treatment to help improve their self-esteem.

More recently the Foundation has worked with frontline staff at Westmead Hospital during COVID-19, providing staff with care packages and reaching out to many generous corporate donors who have helped renovate the Westmead Hospital Foundation retreat (*refer to page 27 for the full story*).

## The difference Doctors can make

Dr Philip Lee at the  
Margi Doig golf day  
to raise money for  
Westmead Hospital's  
Palliative Care Service.



Dr Philip Lee has been involved with Westmead Hospital Foundation for many years, both in his capacity as the former Western Sydney Local Health District Director of Supportive & Palliative Medicine and as a Foundation Ambassador.

Dr Lee holds many fond memories of the patients he has cared for, and the families whose lives he has touched. One such family is the Doig family. Margi Doig was a patient of the Westmead Hospital Palliative Care service who sadly passed away in 2006 after a long battle with cancer.

Margi’s sons, Ben and Matt were so touched by the care and compassion she received at Westmead that they met on the anniversary of their mother’s birthday with friends on the golf course and raised money for the hospital’s palliative care service. Over the past ten years the Doig family has raised more than \$67,000 for the Palliative Care ward, and have significantly contributed to improving the quality of care and comfort provided to patients.

Dr Lee said, “Many families of patients who were cared for at Westmead Hospital Palliative Care are keen to donate funds as a way of thanking the service for the care

shown to their loved ones. The Foundation has actively coordinated these donations and reassuring families that their funds have been used in the manner intended”.

After a long career Dr Lee retired from medicine in 2017. However, he still actively supports the annual Run4Jess fun run, now in its ninth year raising funds for the Palliative Care ward. He also actively participates in the Coleman Greig Challenge each year, which continues to raise funds for the Neonatal Intensive Care Unit at Westmead Hospital.

The last word about Dr Lee and Palliative Care goes to Margi’s family; “There are not enough words, funds or actions that can show our appreciation to the clinicians at Westmead Hospital,” said Ben’s wife Belinda. “Not every patient and family receive the happy ending they pray and hope for, but when a team provides the level of care we have experienced, all you can do is try to repay it in some way.”



'Westmead Hospital Foundation is grateful to many former patients and members of the community who have given legacy gifts, and given in memory of a loved one.'



## A legacy to last

\$1 million grants awarded to Westmead doctors and researchers from bequests from Betty Schofield and Joyce Anderson.



A bequest is a planned gift, a designated part of a person's Estate bequeathed to another person, or to a not-for-profit organisation like Westmead Hospital Foundation. Bequests can also be a promise from someone who may not have the ability to make a gift during their lifetime. William Shakespeare famously bequeathed his wife, Anne Hathaway, his 'second best bed' in his Will. Napoleon Bonaparte gifted his hair, shorn from his head after death to a number of his friends. And American businesswomen, Leona Helmsley left \$12 million to her dog.

Whilst there is a common misconception that only the rich leave gifts in Wills, Westmead Hospital Foundation is grateful to many former patients and members of the community who have given legacy gifts, or given in

memory of a loved one. These gifts have made a positive difference to the hospital staff and patients and continue to do so for years to come.

Betty Schofield is one such person, a former Matron of Parramatta Hospital who left a gift in her Will to fund research into Coeliac disease. Although she passed away some years ago, Betty's legacy is still funding several research projects today.

We know that writing a Will is not easy and that leaving a gift to Westmead Hospital Foundation to support Westmead Hospital is one of the biggest decisions that you will make. You can view our guide to writing your Will on our [website](#) or for a confidential discussion, please free call us on 1800 637 037.



## Where we are now

For 30 years, the Foundation has provided support to medical research and patient care at Westmead Hospital. Through generous donations and legacy gifts, the Foundation has raised tens of millions of dollars to fund research buildings and life-saving equipment to support the community and beyond.



## Corporate for Community

“Westmead Hospital supported us, they gave all their love and all their care and attention to us when we were there, which is something I can never forget”



“As I endeavour to become an obstetrician/gynaecologist, it is a real privilege to engage with the amazing team at Westmead Hospital.

As a long time Ambassador for Westmead Hospital Foundation it is great to support the incredible work that Joe, Alison and the team do to help the Women and Newborn Health team through the Colman Greig Challenge.”

*Dr Jana Pittman,  
Westmead Hospital Foundation Ambassador*

Western Sydney's leading law firm, Coleman Greig Lawyers have been long-time supporters of Westmead Hospital Foundation. Since 2013, they have raised over \$1 million through their annual Challenge, a corporate event raising funds for children with special needs and newborn care. Over the years, Coleman Greig Lawyers have supported Westmead Hospital Foundation, St Gabriel's School Castle Hill and the Royal Institute for Deaf and Blind Children (RIDBC).

Each year the event gathers more support and in 2019, Western Sydney's largest charity event raised over \$200,000.

More than 600 people took part in the course held at Parramatta Park and Ceren Sancak was one of those people. The local mum was inspired to take part after her daughter Mila was born ten weeks' premature and spent two months in Westmead's Neonatal Intensive Care Unit.

It was a joyous moment as Ceren crossed the finish line with Mila, her husband Can and son Doruk. “It's something little that means a lot to me because all the

team at Westmead Hospital supported us, they gave all their love and all their care and attention to us when we were there, which is something I can never forget,” Ceren said.

Race founder and Principal of Coleman Greig Commercial Property team Andrew Grima described the 2019 Coleman Greig Challenge as a terrific success. “We love the way the Challenge brings the community and businesses together and there is an option for everyone to be part of the Challenge! You can walk, run, cycle or volunteer,” said Andrew.

World champion athlete and Foundation Ambassador, Jana Pittman took part in the 2.5 kilometre walk with her daughter Jemima as part of the Westmead Hospital Foundation team. It was Jana's fourth time doing the Coleman Greig Challenge and she particularly enjoyed meeting Ceren and Mila. “The community for this event is really wonderful; people from all walks of life – medicine, business, community, churches – all join together and get involved,” Jana said.



## Coleman Greig Challenge - making a difference to newborn care

The Coleman Greig  
team at the Coleman  
Greig Challenge



"Coleman Greig has partnered with the Westmead Hospital Foundation for over four years and commends them on all the work that they do within the local community.

The synergy between Coleman Greig and Westmead Hospital Foundation is profound and unique. Through events such as the Coleman Greig Challenge, together we have raised an impressive \$353,197 for vital pieces of medical equipment for newborn care. In 2019, the Foundation was able to purchase machinery that

allows women to move freely and naturally during labour while ensuring the wellbeing of their baby, often resulting in fewer interventions and complications.

We congratulate the Foundation on its 30 year anniversary and we look forward to continuing to nurture our partnership and working collaboratively to help those in our local communities. We feel privileged to play a small part in the bigger picture."

- Coleman Greig Lawyers

## Ramadan spirit of giving benefits Westmead newborns

Mother of one-week  
-old premature twin  
girls Lamyaa Al-Sabti  
was grateful for the  
donation as both her  
babies required the  
use of the equipment  
to treat their jaundice.



During Ramadan in 2019, the local Muslim and Lebanese communities donated \$6,500 to Westmead Hospital Foundation for mothers and newborn babies at Westmead Hospital.

Westmead Hospital Chaplain Imam Anwar Albarq and the Lebanese Muslim Association's General Manager Khaled Adlameddine raised the money as part of a Ramadan appeal for Women's and Newborn Health at Westmead Hospital.

This money has been used to purchase equipment that can treat yellowish skin caused by jaundice in babies.

Imam Anwar Albarq said, "It is my duty as a Muslim to support any good cause".

"Helping others is very encouraged in our traditions and donating is highly recommended, especially in the month of Ramadan."

"Ramadan is one of the best times of the year to give Sadaqa – charity. Not only is the religious reward higher, the feeling of doing something great for my fellow mothers and their babies is deeply satisfying."

Khaled Alameddine said the donation is the beginning of a strong relationship between the Lebanese and Muslim communities and Westmead Hospital.

"We are very happy to be opening the bridge between our local Lebanese and Muslim communities," Khaled said.





Run 4 Jess 2019 Event

## The power of community spirit

“Your donations make a real difference to the lives of people living with cancer”

Earlier this year an annual fun run event was hosted for the first time as a ‘virtual event’ and raised funds for Westmead Hospital’s Oncology ward.

When COVID-19 restrictions came into effect Lynette Gillies faced the prospect of cancelling the annual Run 4 Jess fun run event at C.V. Kelly Park Girraween, which she has hosted for the past eight years in honour of her daughter-in-law, Jess Clark, who passed away from cancer in 2013.

Lynette said, “Given the COVID-19 situation, the health and safety of everyone was our priority”.

Lynette organised the event online and participants wore Jess’s favourite colour green and walked, ran and skipped wherever they liked whilst practising social distancing, including the backyard, home and nearby parks, and took selfies and shared them on Facebook.

Lynette said, “The online fun run was a huge success with over 30 participants donating \$815 to Westmead Hospital’s Oncology ward”.

“Next year we’re going to add the online event to our fun run in the park so everyone can participate, especially people living interstate and overseas”, she said.

Westmead Hospital Foundation Head of Development Joe Conneely said, “Thank you to all the people who embraced the online event and supported Westmead Hospital’s Oncology ward”.

“Your donations make a real difference to the lives of people living with cancer,” he said.

Money raised by Run 4 Jess will purchase new patient information system displays for the Oncology ward at Westmead Hospital.



# What was



“At the height of the first wave, many of the staff were working 12-hour shifts treating the people of NSW through the pandemic.”



# WHF Retreat

Our valued supporters






Anna Watts  
Art



2020 will be a year we will never forget. A global pandemic hit our shores and has had an effect on everyone. At the height of the first wave, many of the staff were working 12-hour shifts in treating the people of NSW through the pandemic. Unaware of how the COVID-19 pandemic would play out, the Foundation quickly realised that the best way we could help Westmead Hospital's healthcare workers was not in terms of equipment or education, but in an area away from the pressures of the frontline.

As a result of our good friends and long-time supporters, Good360 stepped up to help furnish the rest area and assisted in creating an area that supports Westmead Hospital staff during their long shifts. Good360 introduced

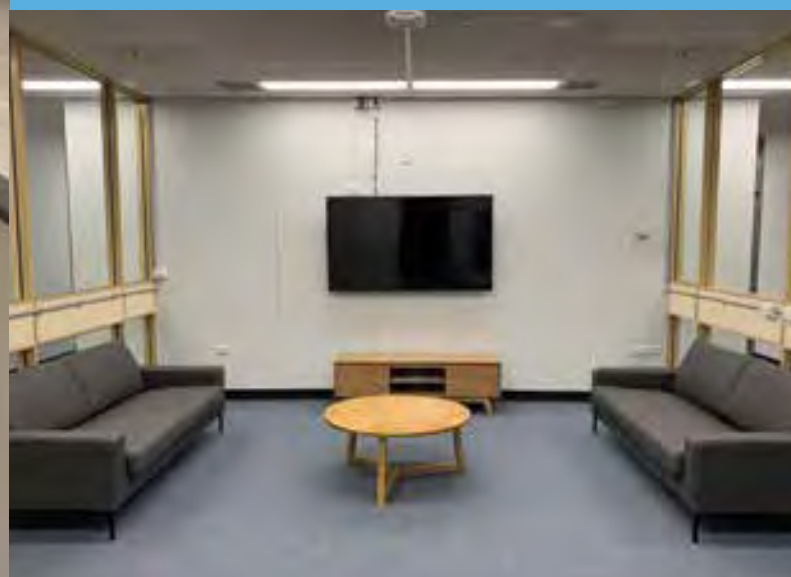
us to King Living Furniture, who generously provided furnishings for communal dining and living spaces.

"What followed has been both humbling and amazing; and can only be described as an outpouring of love from the community, local businesses and individuals" Joe Conneely said. These generous gifts have transformed an area for our healthcare staff to take a break from the hustle and bustle of the frontline.

"We can't thank our supporters enough for updating the rest rooms and keeping our Westmead Hospital healthcare staff spirits high," said Joe.



# What we now have



Thanks to generous gifts from individuals and corporates, the Westmead Hospital Foundation Rest Centre is now somewhere staff can relax and re-energize.



## Facts about Westmead Hospital and COVID-19

### Westmead Hospital is:

- a world-class centre for infection prevention and disease control.
- an approved COVID-19 hospital and treated NSW's first patients who contracted coronavirus.
- the designated Viral Haemorrhagic Fevers (VHF) and High Consequence Infectious Diseases (HCID) facility for NSW.
- has the only PC4 level 4 laboratory in NSW licensed and accredited to safely test viral haemorrhagic fevers like Ebola.
- a referral hospital receiving patients and working with other facilities across the state, and an outreach service for hospitals needing support, services and training like Personal Protective Equipment (PPE) training.
- a new NSW Health state-of-the-art facility for the prevention, containment, and management of high consequence infectious diseases at Westmead Hospital is scheduled to open in October 2020.



## COVID-19 donations from donors to our frontline heroes



tropeaka GREENSTONE

dermatologica

- Health Staff Appreciation Project
- COVID-19 Caring for our medical professionals and their families Facebook group



## Our frontline supporters





## Where we are going

Since its inception, the Foundation's core mission has remained unchanged.

Thanks to the generous support of individuals, community and corporate donors, the Foundation continues to raise funds to support Westmead Hospital's clinical services through state-of-the-art medical and surgical equipment, new technology, hospital research and patient care.





# Celebrating 30 years with our longest serving Board Member

Professor Jeremy Chapman AC is Westmead Hospital Foundation's longest serving Board Member and is perfectly suited to providing a perspective of the life of the organisation.

Well known nephrologist and transplant physician, Professor Jeremy Chapman AC, initially studied medicine at the Universities of Cambridge and London before training in renal medicine and research at the University of Oxford. John Stewart came to Oxford seeking a nephrologist with an interest in transplantation and persuaded Jeremy to join him at the new Westmead Hospital.

Migrating to Australia with his family, Professor Chapman began at Westmead Hospital on 20<sup>th</sup> July 1987, commenting today that, "this date is well ingrained in my memory since it was, I recall, the same temperature in London in summer as it was in Sydney in winter".

Professor Chapman managed the tissue typing laboratory and the organ donation program for NSW from 1987 onwards. He took over as head of department from John Stewart in 1992 and as he recalls, "we grew from being a small renal unit in the west of Sydney with about 50 patients, when I first started, to the largest renal unit in the country with about 850 patients on dialysis and many hundreds with transplants."

Professor Chapman and his colleagues developed the renal research program, creating the largest kidney and transplant research group in Australia and eventually one of the best known globally. The renal program at Westmead has attracted many high calibre researchers

such as Professors Phillip O'Connell and David Harris, and Associate Professor Germaine Wong and Dr Brian Nankivell amongst others. Professor Chapman feels strongly that, "Western Sydney should be proud of the team working here, each of whom has a global reputation helping to deliver one of the best kidney healthcare programs in the world".

Professor Chapman was invited to join the Westmead Hospital Foundation Board in 1992 to help develop the charitable philanthropy that was needed to support the growth of the hospital and its research and education roles. Professor Chapman said, "The Foundation was a tremendously important opportunity for the hospital to engage better with the community."

Although Westmead was developed to create a fully-fledged tertiary hospital with education and research programs, by 1993 it was realised that the research program was Westmead's best kept secret. It was decided that a new building to house a prominent research institute was needed, and Westmead Hospital Foundation was charged with raising the funds to construct the first Institute building, now housing the Research Education Network. Opened on 16<sup>th</sup> June 2000 by Prime Minister John Howard, the new \$10 million Millennium Institute rapidly became the sixth largest medical research institute in Australia.

The Dalai Lama and  
Professor Jeremy  
Chapman AC



Professor Chapman said, "The Foundation was integral in helping raise that money and helping raise support within the organisation and externally within the community for this renewed vision of research at Westmead. The problem with success is that it breeds success and you have to do more. The Millennium Institute building and the stimulus for research that occurred from that, led to massive growth, and it was not too long before another bigger building was needed."

Westmead Hospital Foundation then provided seed funding of \$10 million for the construction of the new Westmead Institute for Medical Research building. The Institute now has its own foundation to develop its charitable support to fund research carried out in that now independent Research Institute. The Westmead Hospital Foundation has thus been re-framed to focus on the research, education, and healthcare at Westmead Hospital.

Research within Westmead Hospital and across the Western Sydney Local Health District has gone from raising around \$4 million in funding per year, to over \$50 million per year today.

"Westmead Hospital Foundation has an unremitting commitment to the goals that they espouse. The Foundation has risen with Westmead Hospital and the

Institutes around us, from the dust of an old racetrack in Western Sydney to become world renowned institutions that are here forever. If you wish to donate to Westmead Hospital Foundation 'In Memorium', in other words to be remembered down the years, we can guarantee that we are going to be here in another 30, 60, 100 years' time. Westmead is not going away, and neither is the Foundation".

Professor Chapman is passionate that the Foundation has a renewed vigour to raise funds for research, education, and clinical care at Westmead Hospital. As Professor Chapman explained, "The community support of the hospital is an essential component of the hospital's support of the community. The Foundation is the mechanism to identify that support; to promote that support in both directions, and to permit the community to provide additional support for their own healthcare over and above what comes in the Government".

Professor Chapman concluded, "I have lived and worked in Western Sydney for nearly 33 years and 30 of those have been with the Foundation which is a crucial component of what we do. It has been a blast and I have loved every minute!".



# Farewell to a visionary

Professor Tony Cunningham AO retired this year from his long and illustrious career at the forefront of medical innovation at Westmead. We got the chance to chat with him about his many contributions to medicine and his long-time contribution to the Westmead Hospital Foundation Board.

Professor Anthony (Tony) Cunningham AO is an infectious diseases physician, clinical virologist and scientist, internationally renowned for his research on the immunobiology of HIV and herpes viruses, his work on vaccine and microbicide development, and as an antivirals expert.

Professor Cunningham previously worked at Stanford University, USA, and established the state reference Virology laboratory and the state reference HIV laboratory at Westmead Hospital, and at the Westmead Institute for Medical Research.

Initially invited back to Australia to become the Director of clinical research at Fairfield Hospital for infectious diseases in Melbourne, an administrative mix up meant that this position was not ready when he arrived. "I looked around Australia for a congenial place to come, and a very famous nephrologist, Priscilla Kincaid-Smith said I should get in on the ground floor at Westmead, so I did".

Professor Cunningham describes himself as essentially an infectious disease physician who became interested in viruses. He was at Stanford University doing post doctoral work between 1983-84 when HIV/AIDS began to be recognised.

"So, I continued with my Herpes virus and HIV research, and over the years I've worked on basic research in both, but I've also worked on the epidemiology and antiviral treatment of Herpes, and diagnostic and clinical research for HIV. I was then invited to work collaboratively with GSK Pharmaceuticals on the development of a Herpes simplex vaccine based on my own research".

GSK Pharmaceuticals then involved Professor Cunningham as the leading academic in the clinical trials developing their successor - a shingles vaccine. "The new shingles vaccine turned out to be immensely successful; the most efficacious vaccine ever in ageing people – 90% effective".

Professor Cunningham believes undoubtably that Westmead Hospital Foundation's most notable achievements have been raising funds and influence for the Institute and particularly for the second building, The Westmead Institute for Medical Research.

"We built the first building, The Millennium Institute between 1998 and 2000 at a cost of \$11.5 million. The Westmead Institute for Medical Research cost nearly \$110 million, and took us 12 years from 2001 to 2013 to raise the funds and get it finished".

Professor Cunningham places equal value on raising funds for the building and raising awareness of the need and significance of the Institute for Western Sydney. He attributes a tremendous amount of the success of this venture to former Westmead Hospital Foundation Executive Director Peter Treseder and former Prime Minister Tony Abbott.

"It was thanks to Peter and Tony Abbott who came and rode in the Pollie Pedal bike ride and raised \$1 million towards the construction of the Institute. The story goes that Peter Treseder and Mark Dado, our Chief Executive Officer and Pat Wilde from the Foundation got together with Tony Abbot during Pollie Pedal and talked about whether the Commonwealth health department would be prepared to respond to our application to build a big multidisciplinary research institute in Western Sydney. To our surprise that was very helpful, and the Commonwealth Government eventually gave us \$30 million and the Foundation itself raised \$9 million".

Professor Tony  
Cunningham AO



Professor Cunningham reflects fondly on the fundraising he became involved with.

"The wonderful people of Western Sydney are the salt-of-the-earth and I have met many of them through the generosity of the Western Sydney Clubs! In particular one of our Foundation Board Members, Alan Overton OAM organised a race day every year. One of my great experiences was speaking to the 'assembled throng' at Rosehill Racing Club while they were noisily enjoying themselves, and I was trying to convince them of the wonderful work of the Institute. It didn't matter in the end that they heard little, as Alan Overton raised \$50,000 for us every time we had a race day".

Professor Cunningham also learned a lot about how the Foundation staff go about fundraising. "As you guys say, 'people give to people'. It was the Foundation that facilitated that connection with the community, and it was as important as its fundraising function, and so very enjoyable getting to know the Western Sydney community".

Professor Cunningham is the first to admit fundraising

in Western Sydney can be challenging. Comparing Westmead to the Eastern suburbs, Professor Cunningham commented, "In Eastern Sydney, other institutes have big donations that come in from a few high net worth individuals. If you are unable to secure high net worth individuals, you need to be connected to the community to look at smaller donations frequently, and you need to look at bequests. I think that's really where we've all been going".

Looking to the future, Professor Cunningham said,

"Westmead has a magnificent future. This is the largest health precinct in the southern hemisphere so it can only continue to increase. One of the reasons it will be an even better place to live in the future, is that it will benefit from our high-tech campus, via surrounding biotech, providing more high quality jobs. So there will be this continuity between a highly active research campus and the translation into a biotechnology park, with high tech jobs, excellent public transport and greater wealth being generated for this part of Sydney."





Central Acute Services Building

## Professor of Immunology reflects on 30 years working with Westmead Hospital Foundation

David Booth and  
Professor Graeme  
Stewart AM



The importance to medical researchers of philanthropic donations can't be overstated. In addition to funding much-needed facilities and equipment, it provides essential career support at difficult times, particularly for younger scientists and fills the gap between Government funding for research projects and the real cost of the work. Of equal importance, it provides all staff involved in medical research with assurance that the community values the work they do, sufficiently so to donate to their endeavours.

Capturing donations for medical research and other worthy causes on a hospital campus requires a well-structured Foundation, volunteer champions at Board level and staff skilled in maximising gift potential. In this regard, and as the first philanthropic foundation on the Westmead campus, the Westmead Hospital Foundation can look back over the past 30 years with pride.

I've had the privilege of observing the Foundation, in its various iterations, over those 30 years and the contributions it has made to the growth of Westmead as

a major centre in translational medical research, based on the three-part cycle of bedside to bench to bedside, led in large part by hospital clinicians caring for patients and working with well skilled and well resourced clinical and scientific staff. The Westmead environment has provided both the reason and the resources to make a real difference to the lives of people with serious disease. The Foundation has always been a part of this.

My observations come from the perspective of being a founding head of a clinical department (Clinical Immunology & Allergy, 1980-2019) and from being head of one of the four founding research groups, in 1996, of The Millennium Institute. From these viewpoints, I have watched the extraordinary growth of Westmead and the current Westmead Institute for Medical Research, to which the Foundation has made substantial contributions in many ways.

I congratulate the Foundation on its first 30 years and wish it well for ongoing contributions over the next 30.





Every  
picture  
tells a  
story



Supporting Westmead Hospital is at the heart of everything we do ♥



# How you can help

Public health funding does not cover the full extent of services provided or equipment needed at Westmead Hospital. Westmead Hospital Foundation exists to help fill that gap and ensure that the world-class medical services and research at Westmead Hospital can continue to benefit the community.

Deciding what part you can play to make a difference in the community and the choice of who to support is not easy. With hundreds of charities, all good causes, competing for our support in Western Sydney alone – it can be daunting.

What you may not realise though is that through Westmead's reach – you, your colleagues and your family are already part of the story here at Westmead.

## How you can make a difference

- make a donation
- become a regular donor
- collect donations in lieu of presents at a celebration
- partner with us through your business or community group
  - give In Memory of a loved one
  - leave a lasting gift in your Will

westmeadhf.org.au  
 freecall 1800 639 037  
 info@westmeadhf.org.au  
 PO Box 74 Westmead  
 NSW 2145





**WESTMEAD  
HOSPITAL  
FOUNDATION**

[westmeadhf.org.au](http://westmeadhf.org.au)

1800 639 037

[info@westmeadhf.org.au](mailto:info@westmeadhf.org.au)

PO Box 74 Westmead

NSW 2145

**30**  
**YEARS**